

The Mississippi Statistical Analysis Center was created by executive order of Governor Ronnie Musgrove in October of 2000. The mission of the MS-SAC is to provide sound statistical information in order to improve

Table of Contents

Introduction	4
Methodology	7
Overview	8
7th Circuit	12
Hinds County	
12th Circuit	16
Forrest County	
Perry County	
14th Circuit	24
Lincoln County	
Pike County	
Walthall County	
19th Circuit	38
George County	
Greene County	
Jackson County	
Juvenile Drug Courts	50
Overview	50
Adams County	54
Madison County	57
Perspectives	61
Judges	61
Administrators	62
Probation Officers	63
Conclusions and Recommendations	64

those outcomes.

In addition, the National Drug Court Institute also identifies the following as goals of drug courts:

to decrease criminal recidivism

to provide cost-effective intervention with drug offenders

to concentrate expertise about drug cases into a single courtroom

to increase retention in drug treatment through judicial supervision and sanctions

to provide drug-involved offenders with the opportunity for affordable treatment

to address other needs of drug-involved offenders through clinical assessment, effective case management, and to “free up” judicial, prosecutorial and defense resources for other types of cases

Requirements for admission into drug court programs vary from jurisdiction to jurisdiction, but can be summarized into three general criteria. First, the offender must be charged with an alcohol or drug-related conviction or the crime was committed under the influence or to support the substance abuse. Second, the offender has no conditions that would preclude benefit from treatment. Finally, the offender has not been convicted of a violent offense and does not pose a substantial risk to society.

As of April 2006, there were 1,557 drug courts operating in the United States, and 394 more were in the planning phases. Currently, fifty states plus the District of Columbia, Northern Mariana Islands, Puerto Rico, Guam, two Federal Districts and 136 tribal programs have drug courts that are in operation or are being planned. In addition, there were 73,000 adult and 4,000 juvenile graduates from drug court programs as of 2006. There was an estimated 1,000 drug-free babies born, 3,500 parents who either regained or retained custody of their children, 4,500 resumed child support payments, and seventy-three percent (73%) retained or obtained employment (Drug Courts, 2006).

In addition, research and program evaluations suggest that drug courts save money. The National Association of Drug Court Professionals estimates incarceration of drug offenders costs between \$20,000 and \$50,000 per person per year, with the capital costs of building a prison cell at around \$80,000. In contrast, the typical drug court system costs less than \$2,500 per year per offender

Dade County Drug Court

In 1989, the first drug court in the United States was implemented in the Eleventh Judicial Circuit Court of Florida under the supervision of the Honorable Herbert M. Klien. This drug court was established a diversion and treatment program for drug offenders. The main components of this program were early identification of appropriate candidates, diversion from the ordinary course of prosecutions, and rehabilitation of defendants with intensive supervision by the drug court judge and treatment specialist. This drug court program offered drug offenders the chance to avoid prosecution, get off drugs and change their lives in a positive way. Participation in the drug court program was voluntary.

Drug Courts in Mississippi

The first drug court in the state of Mississippi began in Ridgeland, Miss. in 1995. The drug court concept

The survey was accompanied by a letter of explanation and a self-addressed stamped envelope. If potential respondents did not return their questionnaires after two weeks, a follow-up letter was mailed to the non-respondents reminding them that their participation would be greatly appreciated. This follow-up letter was accompanied by an additional copy of the original questionnaire and a self-addressed stamped envelope. If potential respondents did not return their questionnaires after two weeks, a third and final follow-up letter was mailed to nonrespondents. This final follow-up letter was accompanied by an additional copy of the original survey and a self-addressed stamped envelope.

Descriptive analysis and frequency distributions are presented to provide the reader with a general understanding regarding the compositions of the sample, individual programs and counties within those programs. Statistical analysis was performed using the Statistical Package for the Social Sciences.

This section provides aggregate data for the adult drug court participants. It was necessary to ascertain the composition of the sample in its entirety prior to analyzing each program. The analysis represents adult drug court programs in the 7th, 12th, 14th and 19th circuits (N= 951), and in turn should be fairly representative of adult felony drug court programs in the state of Mississippi. Similar tables, figures and explanations are provided for each county in later sections of this report.

There are approximately 2.9 million in Mississippi, 61.2% of which are Caucasian, 36.9% of which are African-American, 0.4% of which are American Indian and Alaska Native, 0.7% of which are Asian, 0.6% of which are persons reporting two or more races, and 1.7% of which are Hispanic or Latino. Of the approximate population, 51.4% are female and 48.6% are male.

Adult drug court participants ranged in age from 16 to 64 (M = 30.93, std. dev.=9.189). Race was originally reported as: Caucasian (57.2%, n=544), African- American (39.2%, n=373), Hispanic (.2%, n=2), Native American (.4%, n=4) and other (.4%, n=4). However, due to the lack of diversity (n = 11), race was di-

Table 1.1 Client Status, Race, & Gender										
	Active		Graduate		Absconded		Terminated		Totals	
	n	%	n	%	n	%	n	%	n	%
Caucasian	285	64.8%	117	56%	20	41.7%	120	53.3%	542	58.8%
Female	112	25.5%	40	19.1%	8	16.7%	39	17.3%	199	21.6%
Male	173	39.3%	77	36.8%	12	25%	81	36%	343	37.2%
Minority	155	35.2%	92	44%	28	58.3%	105	46.7%	380	41.2%
Female	39	8.9%	27	12.9%	2	4.2%	17	7.6%	85	9.2%
Male	116	26.4%	65	31.1%	26	54.2%	88	39.1%	295	32%
Totals	440	100%	209	100%	48	100%	225	100%	922	100%

Of the total adult drug court population, 660 participants were Protestant (69.4%), 35 were Catholic (3.7%), 3 were Jewish (.3%), 10 were other (1.1%), and 44 did not report a religious affiliation (4.6%).

Marital Status was reported as single (50.4%, n=479), married (16.4%, n=156), divorced (20.1%, n=191), widowed (1.3%, n=12), and separated (8.1%, n=77). Of the total adult drug court population (n = 951), 298 reported having no children (31.3%), 196 reported having one child (20.6%), 209 reported having two children (22%), 121 reported having three children (12.7%), 50 reported having four children (5.3%), 23 reported having five children (2.4%), 7 reported having six children (.7%), 4 reported having seven children (.4%), and 8 reported having eight or more children (.8%). The adult drug court population includes parents of approximately 1,426 children.

Of the total adult drug court population (n = 951), 646 reported having no military experience (67.9%), 2 reported current military experience (0.2%), 12.7% adult drug court population reported having military experience. 12.7% adult drug court population reported having military experience. 12.7% adult drug court population reported having military experience.

Figure 1.2 illustrates substance abuse history and race of adult drug court participants. Alcohol use was high for both Caucasians (82.3% reporting use) and minorities (79.7% reporting use). Marijuana use was also prevalent in both categories, with 76.2% of Caucasians and 81.8% of minorities reporting use at intake. Powder or unspecified cocaine use was reported by 45.6% of Caucasians and 37.6% of minorities. Crack cocaine use was more prevalent among minorities (31.3%) than Caucasians (18.5%). Methamphetamine use was overwhelmingly high among Caucasians (53.1%) when compared to minorities (2.4%). Heroin use was low for both Caucasians (3.9%) and minorities (.5%). Prescription drug use (Rx Drugs) was primarily reported by Caucasians (54.1%) in comparison to minorities (9%). Other drug use was reported by 28% of Caucasians and 8.4% of minorities.

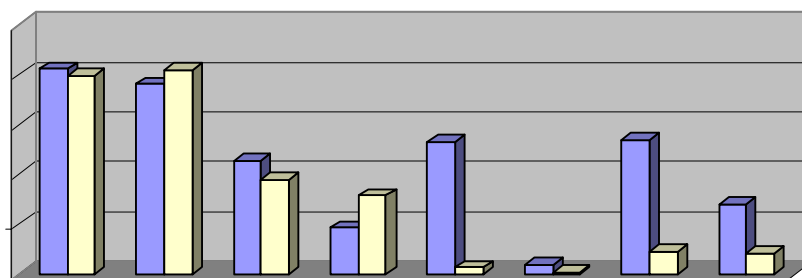


Table 1.4 provides criminal histories for all adult drug court programs. For each offense, participants were coded as “no conviction,” “convicted,” “drug court charge” (indicating a nonadjudicated offense in a pre-trial diversion program), “D.C. & Prior” (indicating a non-adjudicated offense in a pre-trial diversion program and one or more past convictions of the same offense) and “Unknown” (indicating missing data). For the total adult drug court population (n = 951), possession of a controlled substance (Possession C/S) (59.8%) was the dominant offense among adult drug court participants, followed by probation or parole violation (22.6%) and DUI or DWI (21.8%). It should be noted that these statistics account for convictions and drug court charges, not arrests.

	No Conviction		Convicted		Drug Court Charge		D.C. & Prior		Unknown (Missing)	
	n	%	n	%	n	%	n	%	n	%
	Possession C/S	328	34.5%	304	32.0%	212	22.3%	52	5.5%	55
Possession w/ Intent	853	89.7%	19	2.0%	5	0.5%	0	0.0%	74	7.8%
Property Offense	700	73.6%	154	16.2%	26	2.7%	9	0.9%	62	6.5%
Forgery (Rx)	828	87.1%	21	2.2%	27	2.8%	4	0.4%	71	7.5%
Forgery (Utterance)	840	88.3%	35	3.7%	2	0.2%	0	0.0%	74	7.8%
Possession of Precursors	810	85.2%	43	4.5%	24	2.5%	3	0.3%	71	7.5%
Embezzlement	864	90.9%	7	0.7%	5	0.5%	0	0.0%	75	7.9%
Probation / Parole Violation	674	70.9%	210	22.1%	5	0.5%	0	0.0%	62	6.5%
DUI / DWI	674	70.9%	206	21.7%	1	0.1%	0	0.0%	70	7.4%
Other Crime	640	67.3%	203	21.3%	37	3.9%	4	0.4%	67	7.0%

The Hinds County Drug Court Probation Mississippi. Hinds County has an approximate population of 250,000 (U.S. Census Bureau). The majority of the population is African American (66%) and females comprise 52% of the population (U.S. Census Bureau).

The HCDCPP is maintained by a staff of drug court personnel and one drug court judge. It should be noted that the HCDCPP has cycled through several judges since its inception, due to promotions and appointments.

Hinds County participants (65.8% minority and 34.2% Caucasian) were fairly representative of general

Figure 2.1 illustrates education levels for Hinds County participants. Fifty percent of participants never graduated high school (6% had an 8th grade education or below and 44% had some high school). Fifteen percent had high school diplomas and 9% had acquired a G.E.D. One-fifth (20%) of participants had some college education, and 6% had earned a bachelor's degree.

	Active		Graduate		Absconded		Terminated		Totals	
	n	%	n	%	n	%	n	%	n	%
Unemployed	62	27%	44	19.1%	3	1.3%	53	23%	162	70.4%
Employed	37	16.1%	22	9.6%	1	0%	8	3.5%	68	29.6%

Table 2.3 provides information concerning drug use characteristics among client status categories. Regardless of category, most clients had used alcohol and marijuana at the time of intake. Powder or unspecified cocaine use was relatively low except in the active category (50% of active clients reported using cocaine). Crack cocaine exhibited higher levels of use among all client categories; in particular, it should be noted that 100% of absconded clients reported using crack cocaine. Methamphetamine use was not widely reported in any category, although 27% of active participants and 26.2% of terminated participants reported some use. Heroin use was low in general. Prescription drugs were used slightly more by active clients (31%) than graduates (27.5%) or terminated clients (21.3%). No absconded clients reported using prescription drugs. The use of other drugs was relatively low for all categories, particularly graduates (1.5%) and absconded clients (0%).

	Active	Graduate	Absconded	Terminated
	(n=100)	(n=69)	(n=4)	(n=61)
Alcohol	92%	88.4%	75%	90.2%
Marijuana	95%	94.2%	100%	93.4%
Cocaine - p	50%	17.4%	0%	29.5%
Cocaine - r	51%	55.1%	100%	62.3%
Meth	27%	14.5%	0%	26.2%
Heroin	1%	0%	0%	3.3%
Rx Drugs	31%	27.5%	0%	21.3%
Other Drugs	18%	1.5%	0%	11.5%



Table 2.4 Criminal History - Hinds County

	No Conviction		Convicted		Drug Court Charge		D.C. & Prior		Unknown (Missing)	
	n	%	n	%	n	%	n	%	n	%
Possession C/S	38	16.2%	99	42.3%	79	33.8%	17	7.3%	1	0.4%
Possession w/ Intent	226	96.6%	3	1.3%	4	1.7%	0	0.0%	1	0.4%
Property Offense	194	82.9%	33	14.1%	4	1.7%	2	0.9%	1	0.4%
	215	91.9%	8	3.4%						

Table 3.1

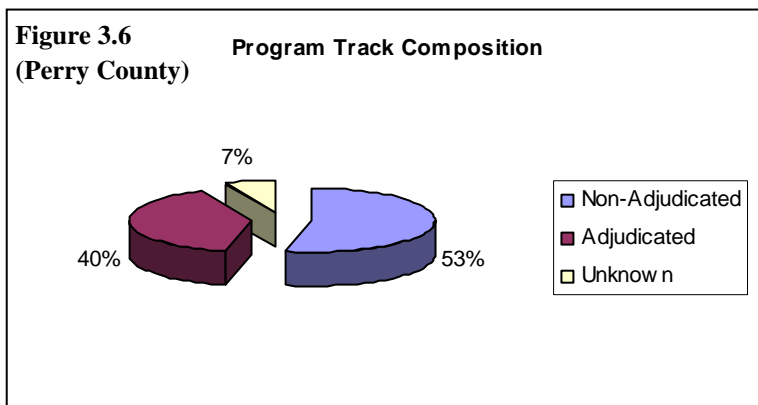
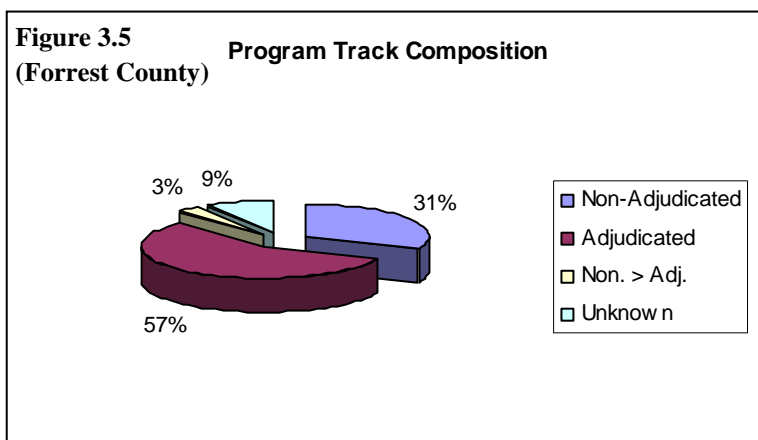
Client Status, Race, and Gender (Forrest County)

Table 3.3



Figures 3.5 and 3.6 provide program track composition data for participants in Forrest and Perry County. As seen in Figure 3.5, the majority of Forrest County clients entered the program as adjudicated offenders. Nearly one-third (31%) of participants were nonadjudicated, while 3% of participants entered the program as nonadjudicated offenders but were eventually adjudicated due to excessive program violations or rearrest. Program track data was unavailable or missing for 9% of Forrest County clients.

The majority of Perry County participants (53%) entered the program as non-adjudicated offenders (see Table 3.6). Forty percent of offenders in Perry County were adjudicated. Program track data was unavailable or missing for 7% of Perry County participants.



Tables 3.7 and 3.8 illustrate criminal histories of participants in Forrest and Perry Counties. As seen in Table 3.7, possession of a controlled substance (Possession C/S) was the dominant criminal offense for Forrest County participants (35.2% were convicted and 13.9% had Possession C/S as a non-adjudicated offense, and 3.7% were previously convicted and had Possession C/S as a nonadjudicated offense). Forrest County participants also exhibited elevated levels of property offenses (21% convicted and 7.4% as non-adjudicated offenses), probation or parole violations (20.4% convicted), and other crimes (32.4% convicted and 2.8% as a nonadjudicated offense). There were also seven participants (6.5%) convicted participants (6.5%) convicted

P

	No Conviction		Convicted		Drug Court Charge		D.C. & Prior		Unknown (Missing)	
	n	%	n	%	n	%	n	%	n	%
	Possession C/S	18	16.7%	38	35.2%	15	13.9%	4	3.7%	33
Possession w/ Intent	53	49.1%	7	6.5%	1	0.9%	0	0.0%	47	43.5%
Property Offense	41	38.0%	21	19.4%	8	7.4%	0	0.0%	38	35.2%
Forgery (Rx)	58	53.7%	4	3.7%	2	1.9%	0	0.0%	44	40.7%
Forgery (Utterance)	56	51.9%	5	4.6%	0	0.0%	0	0.0%	47	43.5%
Possession of Precursors	55	50.9%	5	4.6%	2	1.9%	0	0.0%	46	42.6%
Embezzlement	58	53.7%	1	0.9%	0	0.0%	0	0.0%	49	45.4%
Probation / Parole Violation	49	45.4%	22	20.4%	0	0.0%	0	0.0%	49	45.4%
DUI / DWI	50	46.3%	13	12.0%	0	0.0%	0	0.0%	63	58.3%
Other Crime	28	25.9%	35	32.4%	3	2.8%	0	0.0%	42	38.9%

	No Conviction		Convicted		Drug Court Charge		D.C. & Prior		Unknown (Missing)	
	n	%	n	%	n	%	n	%	n	%
	Possession C/S	0	0.0%	7	46.7%	3	20.0%	4	26.7%	1
Possession w/ Intent	10	66.7%	1	6.7%	0	0.0%	0	0.0%	4	26.7%
Property Offense	8	53.3%	4	26.7%	0	0.0%	0	0.0%	3	20.0%
Forgery (Rx)	12	80.0%	0	0.0%	0	0.0%	0	0.0%	3	20.0%
Forgery (Utterance)	12	80.0%	0	0.0%	0	0.0%	0	0.0%	3	20.0%
Possession of Precursors	12	80.0%	1	6.7%	0	0.0%	0	0.0%	2	13.3%
Embezzlement	12	80.0%	0	0.0%	0	0.0%	0	0.0%	3	20.0%
Probation / Parole Violation	12	80.0%	0	0.0%	0	0.0%	0	0.0%	3	20.0%
DUI / DWI	10	66.7%	3	20.0%	0	0.0%	0	0.0%	2	13.3%
Other Crime	8	53.3%	4	26.7%	0	0.0%	0	0.0%	3	20.0%

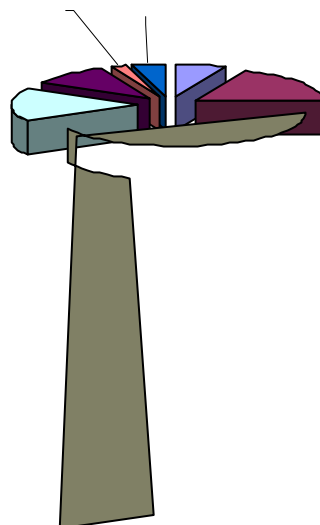
	Active		Graduate		Absconded		Terminated		Totals	
	n	%	n	%	n	%	n	%	n	%
Caucasian	38	84.4%	22	66.7%	2	50%	14	53.8	76	70.4%
Female	20	44.4%	4	12.1%	0	0%	1	3.8%	25	23.1%
Male	18	40%	18	54.6%	2	50%	13	50%	51	47.2%
Minority	7	15.6%	11	33.3%	2	50%	12	46.2%	32	29.6%
Female	1	2.2%	3	9.1%	0	0%	4	15.4%	8	7.4%
Male	6	13.3%	8	24.2%	2	50%	8	30.8%	24	22.2%
Totals	45	100%	33	100%	4	100%	26	100%	108	100%

Table 4.2 Client Status, Race, & Gender (Pike County)

	Active		Graduate		Absconded		Terminated		Totals	
	n	%	n	%	n	%	n	%	n	%
Caucasian	37	46.8%	28	54.9%	2	18.2%	36	65.5%	103	52.6%
Female	13	16.5%	8	15.7%	0	0%	10	18.2%	31	

Table 4.3 illustrates demographic and client status data for Walthall County. Walthall County participants (64.7% Caucasian and 35.3% minority) were not representative of general demographic data for the county overall (55.1% Caucasian and 44.9% minority). Additionally, male participants (61.7%) were also overrepresented when compared to general county demographics (48%). Caucasian males (33.8%, n=23) represented the largest group in Walthall County while Caucasian females were the second largest (30.9%, n=21). Minority males represented 27.9% (n=19) of Walthall County participants, and minority females comprised the smallest group (7.4%, n=5). Active participants (n=28) comprised the largest client status group in Walthall County. Graduates (n=19) slightly outnumbered terminated clients (n=18), and absconded participants represented the smallest client status group (n=3).

	Active		Graduate		Absconded		Terminated		Totals	
	n	%	n	%	n	%	n	%	n	%
Caucasian	21	75%	12	63.2%	2	66.7%	9	50%	44	64.7%
Female	13	46.4%	4	21.1%	0	0%	4	22.2%	21	30.9%
Male	8	28.6%	8	42.1%	2	66.7%	5	27.8%	23	33.8%
Minority	7	25%	7	36.8%	1	33.3%	9	50%	24	35.3%
Female	3	10.7%	2	10.5%	0	0%	0	0%	5	7.4%
Male	4	14.3%	5	26.3%	1	33.3%	9	50%	19	27.9%
Totals	28	100%	19	100%	3	100%	18	100%	68	100%



As seen in Figure 4.2, 27% of Pike County participants did not graduate high school (5% had an eight grade education or below and 22% had some high school). Over one-third (36%) of participants graduated high school and 17% obtained a G.E.D. Ten percent of Pike County participants had some college education, and 1% had earned a bachelor's degree. One participant had a graduate degree (shown as 0% in Figure 4.2). Nine percent of Pike County clients had unavailable or missing education data.

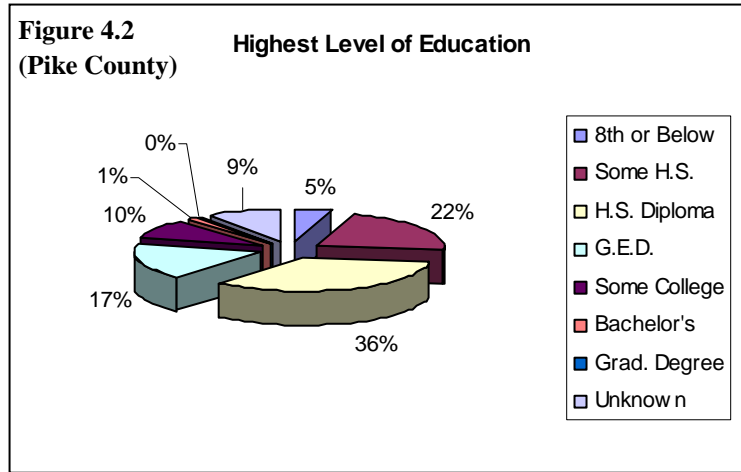
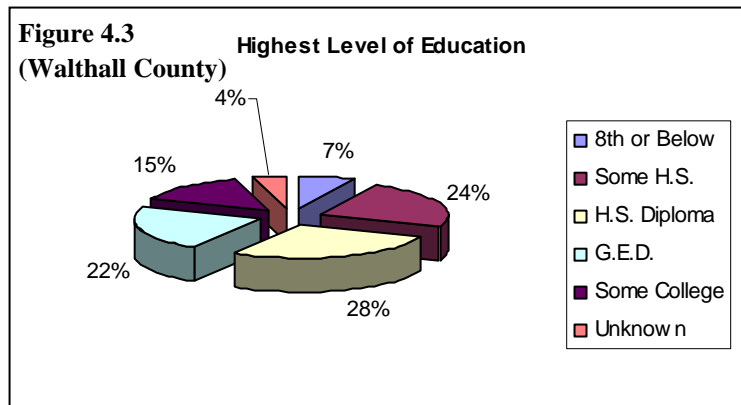


Table 4.3 provides education data for Walthall County participants. Thirty-one percent never graduated high school (7% had an eight grade education or below and 24% had some high school). Twenty-eight percent of participants graduated high school and 22% had obtained a G.E.D. Fifteen percent of Walthall County participants had some college education. Four percent of Walthall County participants had unavailable or missing education data.



Tables 4.4, 4.5 and 4.6 provide employment data for Lincoln, Pike and Walthall Counties. Employment in Lincoln County was reported as: unemployed (30.4%, n=34), construction (14.3%, n=16), food service (6.3%, n=7), sales (4.5%, n=5), industrial (12.5%, n=14), farming or live

Table 4.4		Client Status and Employment at Intake (Lincoln County)									
	Active		Graduate		Absconded		Terminated		Totals		
	n	%	n	%	n	%	n	%	n	%	
Unemployed	15	14.2%	8	7.5%	2	1.9%	9	8.5%	34	32.1%	
Employed	30	28.3%	23	21.7%	2	1.9%	17	16%	72	67.9%	

Table 4.8 illustrates substance abuse history among client status categories in Pike County. Alcohol use was widely reported in all categories: 77.2% of active participants, 92.2% of graduates, 90.9% of absconded participants and 90.9% of terminated clients reported past use of alcohol. Marijuana use was slightly less elevated, with 70.9% of active participants, 66.7% of graduates, 72.7% of absconded participants and 69.1% of terminated participants reporting past use. Powder or unspecified cocaine use was elevated among active participants (51.9%), absconded participants (54.6%) and terminated participants (52.7%). Only 31.4% of graduates reported past use of cocaine. Reported use of crack cocaine was low among active participants (12.7% reported past use) and absconded participants (9.1%). Crack cocaine use was slightly higher among graduates (19.6%) and terminated participants (20%). Methamphetamine use was relatively low for all client status categories: 15.2% of active participants, 17.6% of graduates, 9.1% of absconded participants and 10.9% of terminated participants reported past use. Heroin use was low in all client status categories. Reported use of prescription drugs were: 31.6% of active participants, 37.3% of graduates, 9.1% of absconded participants and 23.6% of terminated participants. Other drug use was slightly elevated for all client status categories: 11.4% of active participants, 17.6% of graduates, 9.1% of absconded participants and 14.5% of terminated participants reported past use.

	Active (n=79)	Graduate (n=51)	Absconded (n=11)	Terminated (n=55)
Alcohol	77.2%	92.2%	90.9%	90.9%
Marijuana	70.9%	66.7%	72.7%	69.1%
Cocaine - p	51.9%	31.4%	54.6%	52.7%
Cocaine - r	12.7%	19.6%	9.1%	20%
Meth	15.2%	17.6%	9.1%	10.9%
Heroin	2.5%	3.9%	0%	5.5%
Rx Drugs	31.6%	37.3%	9.1%	23.6%
Other Drugs	11.4%	17.6%	9.1%	14.5%

Table 4.9

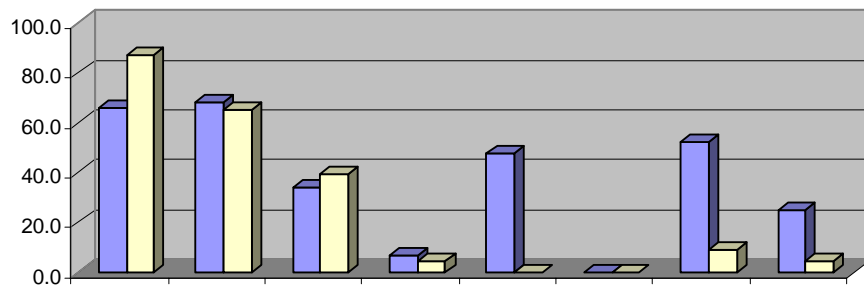
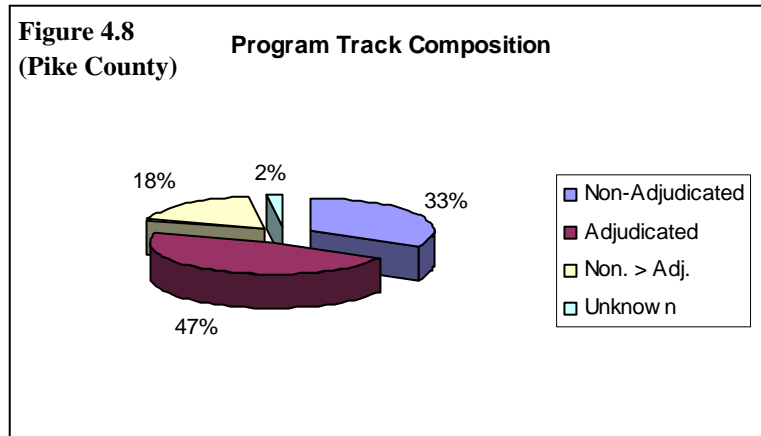
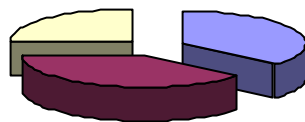


Figure 4.8 illustrates program track data for Pike County participants. One-third (33%) of Pike County participants were non-adjudicated offenders. Nearly half (47%) were adjudicated offenders. Eighteen percent of Pike County participants entered the program as nonadjudicated offenders and were eventually adjudicated due to excessive program violations or rearrest. Two percent had unavailable or missing program track data.



As seen in Figure 4.9, over one-third (37%) of Walthall County participants were non-adjudicated offenders. Thirty-eight percent were adjudicated offenders. One-fourth (25%) of Walthall County participants entered the drug court program as nonadjudicated offenders and were eventually adjudicated due to excessive program violations or rearrest.



Tables 4.10, 4.11 and 4.12 provide criminal histories for Lincoln, Pike and Walthall County participants. For Lincoln County participants, possession of a controlled substance (Possession C/S) was the dominant offense: 24.1% convicted, 17.9% had Possession C/C as a nonadjudicated offense and 2.7% had previously been convicted and had Possession C/S as a non-adjudicated offense. No Lincoln County participants reported convictions or nonadjudicated offenses of possession with intent to distribute or sale (Possession with intent). Eighteen participants (16.1%) were convicted of property offenses and two participants (1.8%) had the same as a non-adjudicated offense. Six participants (5.4%) had prescription forgery as a nonadjudicated offense and one participant (.9%) had prior convictions for forgery in addition to a nonadjudicated offense of the same. Four Lincoln County participants (3.6%) were convicted of uttering forgery. One Lincoln County participant (.9%) had been convicted of possession of precursors, and two participants (1.8%) had non-adjudicated offenses for the same. Twenty-one participants (18.8%) were convicted of a probation or parole violation and 31 (27.7%) participants were convicted of DUI or DWI. Twenty-one participants (18.8%) were convicted of other crimes, nine participants (8%) had other crimes for non-adjudicated offenses, and four participants had previously been convicted of other crimes as well as having the same for a non-adjudicated offense.

	No Conviction		Convicted		Drug Court Charge		D.C. & Prior		Unknown (Missing)	
	n	%	n	%	n	%	n	%	n	%
Possession C/S	58	51.8%	27	24.1%	20	17.9%	3	2.7%	4	3.6%
Possession w/ Intent	108	96.4%	0	0.0%	0	0.0%	0	0.0%	4	3.6%
Property Offense	88	78.6%	18	16.1%	2	1.8%	0	0.0%	4	3.6%
Forgery (Rx)	101	90.2%	0	0.0%	6	5.4%	1	0.9%	4	3.6%
Forgery (Utterance)	104	92.9%	4	3.6%	0	0.0%	0	0.0%	4	3.6%
Possession of Precursors	105	93.8%	1	0.9%	2	1.8%	0	0.0%	4	3.6%
Embezzlement	108	96.4%	0	0.0%	0	0.0%	0	0.0%	4	3.6%
Probation / Parole Violation	87	77.7%	21	18.8%	0	0.0%	0	0.0%	4	3.6%
DUI / DWI	78	69.6%	31	27.7%	0	0.0%	0	0.0%	3	2.7%
Other Crime	74	66.1%	21	18.8%	9	8.0%	4	3.6%	4	3.6%

Table 4.11 Criminal History (Convictions) - Pike County

	No Conviction		Convicted		Drug Court Charge		D.C. & Prior		Unknown (Missing)	
	n	%	n	%	n	%	n	%	n	%
Possession C/S	105	49.5%	49	23.1%	43	20.3%	5	2.4%	10	4.7%
Possession w/ Intent	198	93.4%	3	1.4%	0	0.0%	0	0.0%	11	5.2%
Property Offense	170	80.2%	27	12.7%	3	1.4%	1	0.5%	11	5.2%
Forgery (Rx)	192	90.6%	3	1.4%						

Client Status, Race, and Gender (Greene County)

	Active		Graduate		Absconded		Terminated		Totals	
	n	%	n	%	n	%	n	%	n	%
Caucasian	4	80%	5	100%	0	0%	6	100%	15	93.8%

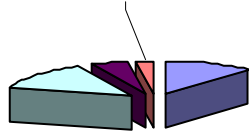
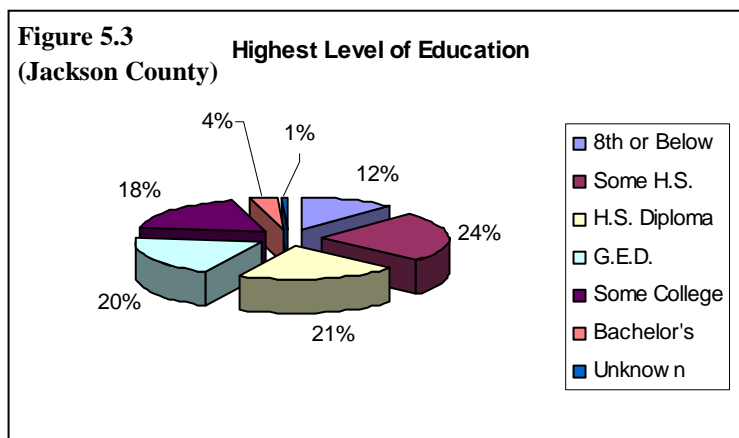


Figure 5.3 illustrates education data regarding Jackson County participants. Thirty-six percent of participants in Jackson County never graduated high school (12% had an 8th grade education or below and 24% had some high school). Twenty-one percent graduated high school and 20% received their G.E.D. Eighteen percent of Jackson County participants had some college education, and 4% had earned a bachelor’s degree. One percent of Jackson County clients had unavailable or missing education data.



Tables 5.4, 5.5 and 5.6 provide collapsed employment data for George, Greene and Jackson Counties. Originally, employment at intake for George County participants was reported as: unemployed (50%, n=22), construction (22.7%, n=10), food service (6.8%, n=3), industrial (6.8%, n=3), education (2.3%, n=1), mechanic and auto repair (2.3%, n=1), and other (6.8%, n=3). One George County participant had unavailable or missing employment data. As seen in Table 5.4, George County participants were slightly more likely to be unemployed at intake (51.2%). Active participants were equally likely to be unemployed or employed. Graduates were twice as likely to be unemployed at intake, while terminated participants were more likely to be employed at intake.

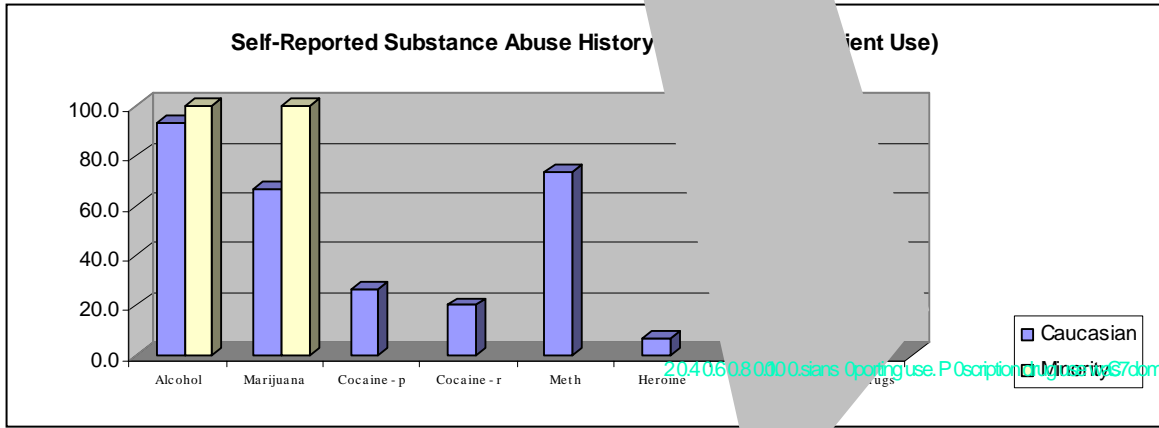
	Active		Graduate		Absconded		Terminated		Totals	
	n	%	n	%	n	%	n	%	n	%
	Unemployed	12	27.9%	6	14%	0	0%	4	9.3%	22
Employed	12	27.9%	3	7%	0	0%	6	14%	21	48.8%

Table 5.7**Client Status and Substance Abuse History (George County)**

	Active (n=25)	Graduate (n=9)	Absconded (n=0)	Terminated (n=10)
Alcohol	88%	100%	0%	80%
Marijuana	84%	77.8%	0%	90%
Cocaine - p	36%	66.7%	0%	20%
Cocaine - r	12%		0%	10%
Meth	72%	88.9%	0%	60%
Heroin	4%	0%		0%
Rx Drugs	76%	77.8%	0%	10%
Other Drugs				

Table 5.9**Client Status and Substance Abuse History (Jackson County)**

	Active (n=88)	Graduate (n=13)	Absconded (n=10)	Terminated (n=20)
Alcohol	80.7%	69.2%	60%	95%
Marijuana	83%	84.6%	70%	75%
Cocaine - p	53.4%	15.4%	20%	45%
Cocaine - r	13.6%	30.8%	20%	35%
Meth	60.2%	61.5%	70%	45%
Heroin				



20406080000sians Ooping use. P Oscriptor Minority 7 dominated by Caucasians (71.6%) in 7con



Figures 5.7, 5.8 and 5.9 illustrate program track composition of George, Greene and Jackson Counties. As seen in Figure 5.7, 41% of George County participants

Table 5.11 illustrates criminal histories among Greene County participants. Five participants (29.4%) were convicted of possession of a controlled substance (Possession C/S), and one participant (5.9%) had Pos-

	No Conviction		Convicted		Drug Court Charge		D.C. & Prior		Unknown (Missing)	
	n	%	n	%	n	%	n	%	n	%
	Possession C/S	11	64.7%	5	29.4%	0	0.0%	1	5.9%	0
Possession w/ Intent	17	100.0%	0	0.0%	0	0.0%	0	0.0%	0	0.0%
Property Offense	12	70.6%	4	23.5%	1	5.9%	0	0.0%	0	0.0%
Forgery (Rx)	17	100.0%	0	0.0%	0	0.0%	0	0.0%	0	0.0%
Forgery (Utterance)	15	88.2%	2	11.8%	0	0.0%	0	0.0%	0	0.0%
Possession of Precursors	10	58.8%	6	35.3%	0	0.0%	1	5.9%	0	0.0%
Embezzlement	17	100.0%	0	0.0%	0	0.0%	0	0.0%	0	0.0%
Probation / Parole Violation	6	35.3%	10	58.8%	1	5.9%	0	0.0%	0	0.0%
DUI / DWI	14	82.4%	3	17.6%	0	0.0%	0	0.0%	0	0.0%
Other Crime	16	94.1%	1	5.9%	0	0.0%	0	0.0%	0	0.0%

Table 5.12 Criminal History (Convictions) - Jackson County

	No Conviction		Convicted		Drug Court Charge		D.C. & Prior		Unknown (Missing)	
	n	%	n	%	n	%	n	%	n	%
Possession C/S	52	39.7%	40	30.5%	27	20.6%	12	9.2%	0	0.0%
Possession w/ Intent	127	96.9%	2	1.6%	0	0.0%	0	0.0%	0	0.0%



Following the establishment of adult drug courts in 1989, jurisdictions began to establish juvenile versions of these specialized programs in 1995. The first juvenile and family drug courts were developed in Birmingham, Ala. Juvenile drug courts have the same basic philosophy, goals and structures as their adult counterparts; however, they also have many unique challenges that influence and challenge their operation. Juvenile drug courts are based around the ideals of rehabilitation and a team-oriented philosophy. In addition, these specialized dockets maintain the orientation of the juvenile court, and the drug court team is expanded to include juvenile probation officers and school officials.

A juvenile drug court is a special program within a juvenile court to which substance-abusing juveniles are referred. A family drug court is a special docket for cases in which the parental rights of adult parties have been placed in jeopardy because of their substance abuse. Family drug court cases may be either criminal or civil in origin. They may include custody, visitation disputes, abuse, neglect, dependency proceedings, petitions to terminate parental rights and guardianship matters. In either type of court, the judge, through frequent status hearings and active collaboration with a drug court team of prosecuting and defense attorneys social services workers, and treatment providers, uses the court's oversight authority to induce the defendant to commit to a course of treatment and rehabilitation.

Currently, there are five juvenile drug courts in operation in the state of Mississippi. Juvenile drug courts are different than adult drug courts in that all cases are adjudicated. Clients enter these courts as a condition of their probation and often remain under the supervision of the Department of Youth Services after their eighteenth birthday. Juvenile records are confidential, and not considered "criminal records"; therefore juvenile clients have the option to expunging their records or of entering a program via pre-trial diversion.

Overview (Juvenile Drug Courts)

This section provides aggregate data for the juvenile court participants. It was necessary to ascertain the composition of the sample in its entirety prior to analyzing each program. The analysis is of the two juvenile drug court programs in Adams and Madison Counties (n = 86). Similar tables, figures and explanations are provided by county in later sections of this study.

Mississippi has an approximate population of 2,900,000, 61.2% of which are Caucasian, 36.9% are African American, 0.4% are American Indian and Alaska Native, 0.7% are Asian, 0.6% are persons reporting two or more races, and 1.7% are Hispanic or Latino. Of the approximate population, 51.4% are female and 48.6% are male.

The juvenile drug court participants (n = 86) ranged in age from 14 to 19 (M = 16.54, std. dev. =1.304). Of the 86 juvenile drug court participants 48 were Caucasian (55.8%), 37 were African-American (43%), and 1 Hispanic (.1.2%). However, due to the lack of diversity in the population for this study, race was dichotomized into Caucasian (55.8%) and Minority (44.2%). Gender was reported as 75 males (87.2%) and 11 females (12.8%).

Of the total juvenile drug court population (n = 86), 94.2% were Protestant (n = 81) and 5 did not report religious affiliation (5.8%). None of the 86 juvenile drug court participants reported having children. Physical disability was coded 73 having no physical disability (84.9%), 12 with present disability (14%), and 1 past disability (1.2%). Mental disability was coded 62 never treated (72.1%),

Table 6.1 illustrates demographic and client status data for both juvenile drug courts. For this sample (n = 82), juvenile participants were fairly representative of the total approximated population for the state of Mississippi with regards to race (client status data were missing for four juvenile participants). Caucasians were under-represented by 2.7%. Like their adult counterparts, juvenile drug court participants' gender is not representative of the total approximated population in Mississippi (48.6% male), in that males were over represented in the juvenile drug courts (76.5% male). Caucasian males comprised the largest category of juvenile drug court participants (36.3%, n=38). Minority males composed the second largest group (40.2%, n=33). Caucasian females represented 12.2% (n=10) of juvenile drug court participants. There was only one minority female (1.2%) participating in a juvenile drug court. Active participants comprised the largest client status group (n=58) among juvenile drug court participants. Graduates (n=13) were the second largest group, outnumbering both absconded participants (n=4) and terminated participants (n=7).

	Active		Graduate		Absconded		Terminated		Totals	
	n	%	n	%	n	%	n	%	n	%
Caucasian	34	58.6%	6	46.2%	4	100%	4	57.1%	48	58.5%
Female	6	10.3%	1	7.7%	2	50%	1	14.3%	10	12.2%
Male	28	48.3%	5	38.5%	2	50%	3	42.9%	38	36.3%
Minority	24	41.4%	7	53.8%	0	0%	3	42.9%	34	41.5%
Female	1	1.7%	0	0%	0	0%	0	0%	1	1.2%
Male	23	39.7%	7	53.8%	0	0%	3	42.9%	33	40.2%
Totals	58	100%	13	100%	4	100%	7	100%	82	100%

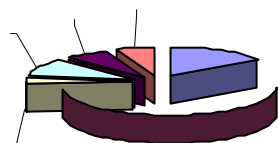


Table 6.2 provides substance abuse data among client status categories in juvenile drug courts. Alcohol use was frequently reported among all client status groups, with 58.6% of active participants, 75.9% of graduates, 50% of absconded participants and 85.7% of terminated participants reporting alcohol use at intake. Marijuana use was also highly reported in all categories: 82.8% of active participants, 92.3% of graduates, 100% of absconded participants and 46.2% of terminated participants reporting use of the same. Powder or unspecified cocaine use was only reported by active participants (24.1% reporting use at intake). Reported use of crack cocaine was extremely low, with only active participants reporting any use (1.7%). Methamphetamine use was also low, with 8.6% of active participants reporting use at intake. No juvenile participants reported using heroine. Prescription drug use (Rx Drugs) was slightly elevated for active participants (27.6% reporting use) and absconded participants (25% reporting use), while graduates reported lower use of the same (15.4% reporting use at intake). Reported use of other drugs exhibited an identical trend: 27.6% of active participants, 15.4% of graduates and 25% of absconded participants reporting use at intake.

	Active (n=58)	Graduate (n=13)	Absconded (n=4)	Terminated (n=7)
Alcohol	58.6%	76.9%	50%	85.7%
Marijuana	82.8%	92.3%	100%	46.2%
Cocaine - p	24.1%	0%	0%	0%
Cocaine - r	1.7%	0%	0%	0%
Meth	8.6%	0%	0%	0%
Heroine	0%	0%	0%	0%
Rx Drugs	27.6%	15.4%	25%	0%
Other Drugs	27.6%	15.4%	25%	0% 15.4%

Table 6.3

Criminal History (Juveniles)

No Conviction	Convicted	Drug Court Charge
--------------------------	------------------	------------------------------

Adams County Juvenile Drug Court

Adams County has an approximate population of 32,626, 43.5% of which are Caucasian, 55.7% are African American, 0.1% are American Indian and Alaska Native, 0.3% are Asian, 0.4% are persons reporting two or more races, and .9% are Hispanic or Latino. Of the approximate population 53.7% are female and 46.3% are male.

Adams County juvenile drug court participants (n = 42) ranged in age from 14 to 19 (x = 16.34, std. dev. 1.260). Of the 42 Adams County juvenile drug court participants 13 were white/Anglo (31%), and 29 were African American (69%). Gender was coded as 39 males (92.9%) and 3 females (7.1%). Four Adams County participants had unavailable or missing client status data. Additionally, no employment information was available for Adams County participants. It is important to note that 8 of the 42 unemployed participants either were not eligible for work (n = 5) or would have needed a work permit to do so (n = 3) due to child labor laws.

Of the Adams County drug court sample (n = 42), 100% were Protestant. No participants reported being married or ever having been married, and no children were reported. NO Adams County participants reported having had any physical disability, past or present. Mental disability was reported as 33 never treated (78.6%), 3 past treatment (7.1%), and 5 present treatment (11.9%).

With regards to race, Adams County participants (34% Caucasian and 65.8% minority) were not representative of the approximated county population (43.5% Caucasian and 56.5% minority), in that minorities were overrepresented by 9.3% (see Table 7.1). Furthermore, Adams County participants (92.1% male) were not representative of 1.29.93TD-0.0c0drpul319.8())3.7e1ion-6.9()mF08(ti49e1T0 -1C.3()20()20tere not9.93)15.0001n

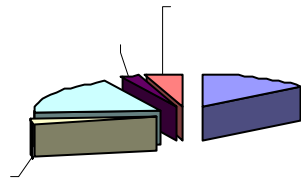


Figure 7.2 illustrates substance abuse history among Adams County participants with regards to race. Alcohol use was reported by more Caucasians (53.9%) than minorities (36.0%), Marijuana use was high among both Caucasians (82.9%) and minorities (88.9%). Powder or unspecified cocaine use was reported by 7.7% of Caucasians and 20% of minorities. Crack cocaine use was limited to minorities (4%). Prescription drug use was low for both Caucasians (7.7%) and minorities (4%). No heroine methamphetamine, heroine or other drug use was reported by Adams County participants.

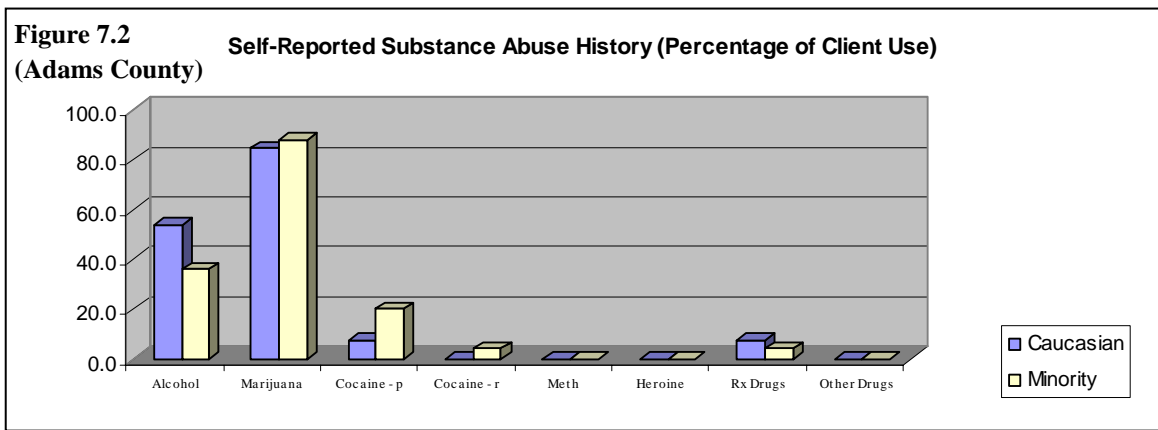


Table 7.3 **Criminal History (Convictions) - Adams County**

No Conviction		Convicted		Drug Court Charge		D.C. & Prior		Unknown (Missing)	
n	%	n	%	n	%	n	%	n	%

Madison County Juvenile Drug Court

Highest Level of Education

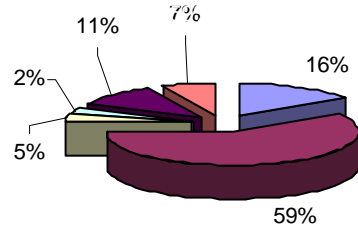


Table 8.3 illustrates substance abuse history among client status categories for Madison County participants. Alcohol use was prevalent in all client status categories, with 93.3% of active participants, 62.5% of graduates, 50% of absconded participants, and 100% of terminated participants reporting use at intake. Marijuana use was reported by 90% of active participants, 87.5% of graduates, 100% of absconded participants, and 100% of terminated participants. Powder or unspecified cocaine use was only reported by active participants (26.7%). No Madison County participants reported using crack cocaine at intake. Reported methamphetamine use was limited to active participants (16.7%). No heroine use was reported among Madison County participants. Prescription drug use was elevated among active participants (46.7%), but slightly lower for graduates (25%) and absconded participants (25%). Other drug use was reported by 53.3% of active participants, 25% of graduates and 25% of absconded participants.

	Active (n=30)	Graduate (n=8)	Absconded (n=4)	Terminated (n=2)
Alcohol	93.3%	62.5%	50%	100%
Marijuana	90%	87.5%	100%	100%
Cocaine - p	26.7%	0%	0%	0%
Cocaine - r	0%	0%	0%	0%
Meth	16.7%	0%	0%	0%
Heroine	0%	0%	0%	0%
Rx Drugs	46.7%	25%	25%	0%
Other Drugs	53.3%	25%	25%	0%

Figure 8.2 illustrates substance abuse history with regards to race for Madison County participants. Alcohol use was reported by 88.6% of Caucasians and 66.7% of minorities. Marijuana use was nearly equivalent among Caucasians (82.9%) and minorities (88.9%). The use of powder or unspecified cocaine was limited to Caucasians (22.9%). No crack cocaine use was reported by Madison County participants. Methamphetamine use was also limited to Caucasians (14.3%). No heroine use was reported. Prescription drug use was more prevalent among Caucasians (42.9%) than minorities (22.2%). Other drug use was reported by 51.4% of Caucasians and 11.1% of minorities.

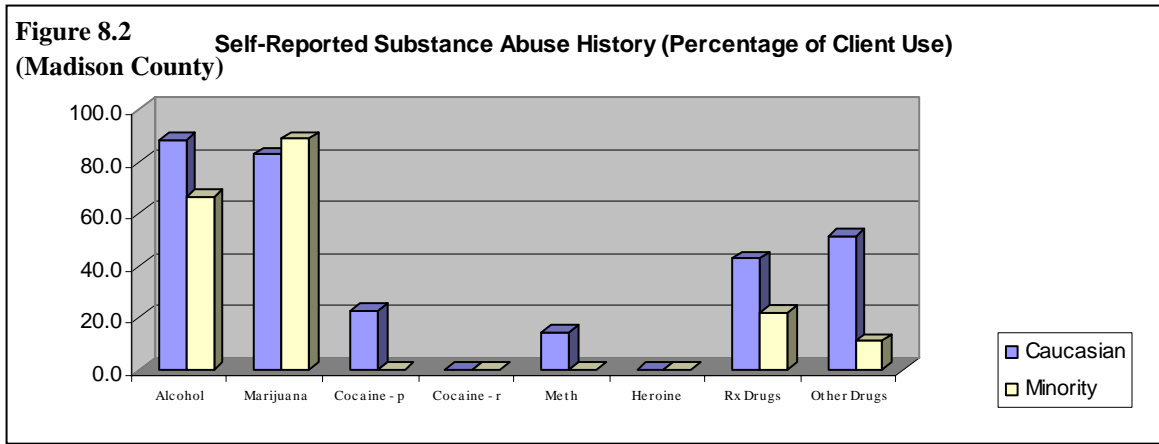


Table 8.4 Criminal History (Convictions) - Madison County

	No Conviction		Convicted		Drug Court Charge		D.C. & Prior		Unknown (Missing)	
	n	%	n	%	n	%	n	%	n	%
Possession C/S	5	11.4%	0	0.0%	14	31.8%	5	11.4%	20	45.5%
Possession w/ Intent	7	15.9%	0	0.0%	1	2.3%	0	0.0%	36	81.8%
Property Offense	6	13.6%	3	6.8%	1	2.3%	5	11.4%	29	65.9%
Forgery (Rx)	7	15.9%	0	0.0%	0	0.0%	0	0.0%	37	84.1%
Forgery (Utterance)	7	15.9%	0	0.0%	0	0.0%	0	0.0%	37	84.1%
Possession of Precursors	7	15.9%	0	0.0%	0	0.0%	0	0.0%	37	84.1%
Embezzlement	7	15.9%	0	0.0%	0	0.0%	0	0.0%	37	84.1%
Probation / Parole Violation	5	11.4%	2	4.5%	1	2.3%	1	2.3%	35	79.5%
DUI / DWI	7	15.9%	1	2.3%	0	0.0%	0	0.0%	36	81.8%
Other Crime	1	2.3%	8	18.2%	8	18.2%	10			

Perspectives

Drug court staff members were asked to complete individual surveys ascertaining their opinions on drug courts as well as demographic information. Surveys were administered to each drug court judge, administrator, and probation officer. The staff me

Drug Court Administrators and Coordinators

Six drug court administrators were surveyed in this study, and all returned useable questionnaires for an overall response rate of 100%. The respondents ranged in age from 35 to 52 (M=43). All of the respondents were female; five were Caucasian (83.3%), and one was African-American (16.7%). Education varied among the respondents: one had some college (16.7%); two had bachelor degrees (33.3%); and three had graduate degrees (50%).

The administrators reported positive aspects of drug courts as:

- opportunity for recovery
- opportunity to become productive members of society
- restoration of family units
- development of life skills
- provision of services for juveniles and their families who would otherwise not be able to afford them
- increases self-esteem
- educates the community about drug use and abuse

Respondents reported negative aspects of drug courts as:

- lack of detention centers
- delays in consequences for behavior
- positive drug tests
- lack of adequate gender specific treatment facilities (total female beds for juveniles in the state of Mississippi is less than 15)
- waiting lists for residential drug treatment centers
- not having a treatment center designed specifically for drug court offenders (for long term treatment)
- client termination

One administrator suggested that a centralized drug court treatment facility be created to serve the needs of Mississippi drug court clients. Other administrators thought this was impossible due to logistics. Clients typically pay for and choose the location of the treatment center. Indigent clients receive treatment through funds acquired in many different ways. One program funds treatment through the board of supervisors; some programs pay for client treatment outright; other programs “lend” clients the money to pay for treatment or partially fund their treatment. Treatment is tantamount to client success. Research has shown that retention, or time in treatment (both initial and ongoing), is a significant factor in ensuring program completion.

Increase public and system awareness about drug court programs.

It is absolutely essential that the general public be made aware of these programs. It is also essential for law enforcement, corrections and court personnel to understand the goals of drug court programs. Increased awareness of drug courts would likely facilitate increased enrollment and public support, both of which are vital to the stability of drug court programs.

Increase drug court personnel.

The increase of personnel would certainly benefit the clients as well as the general public, by increasing the number of clients a program can sufficiently supervise, therefore increasing program revenue and reducing the population of nonviolent drug offenders in jail and prison.

Secure additional resources from state and local governments.

Additional revenue would allow for increased treatment options for clients, staff expansion, and increased client supervision. Increasing resources could also facilitate program growth or expansion.

Increase uniformity among program operations

Mississippi Drug Courts

<http://www.usm.edu/mssac>

Office: (601)266-4760

Fax: (601)266-4391

Mississippi Statistical Analysis Center

**MS-SAC
118 College Drive #5127
Hattiesburg, MS 39406**
