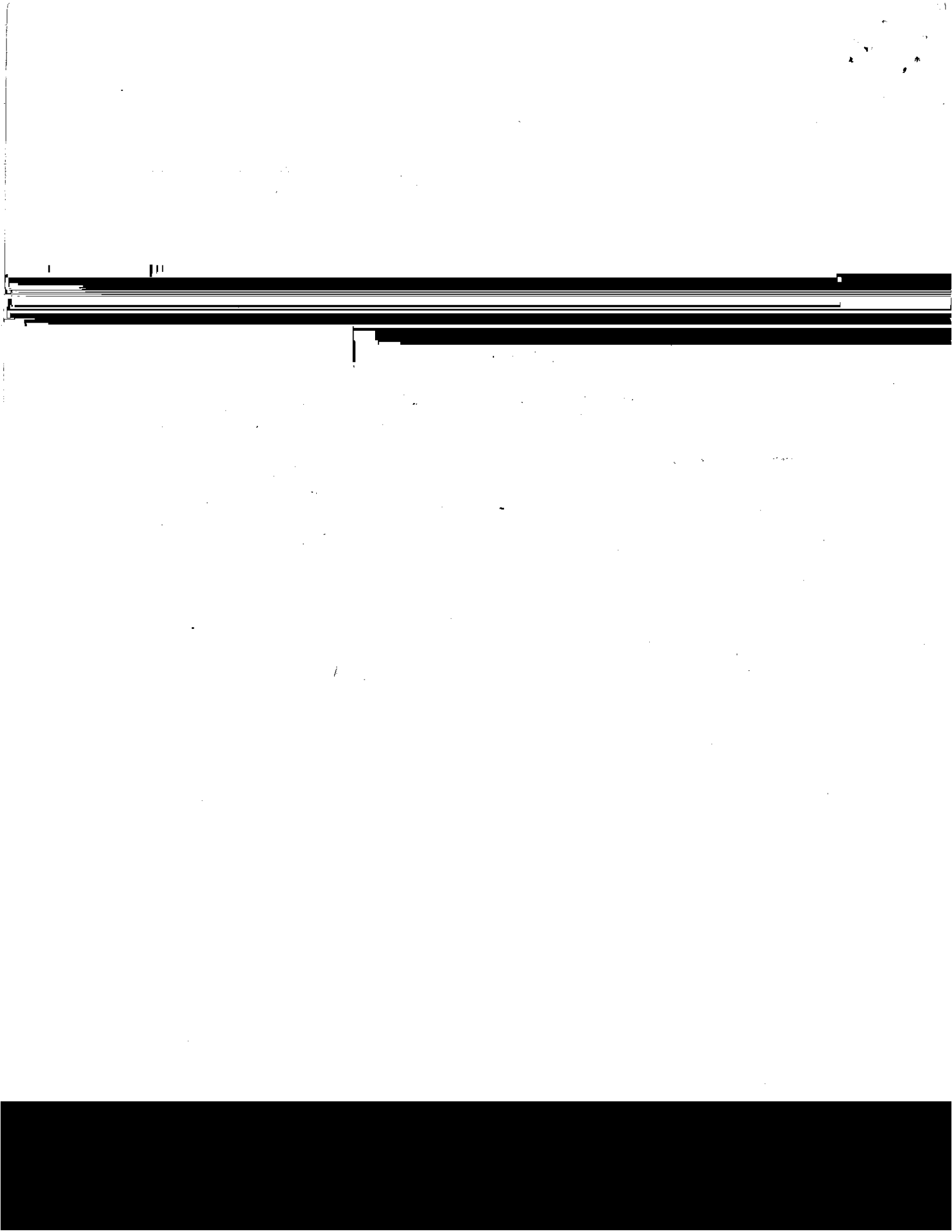




PRACTICE

This packet contains 102 questions. The first 100 are



Multiple Choice
Biological

Question: Corals are most closely related to ?

Answer W: barnacles

Answer Y: sea anemones

Answer Z: sea urchins

Correct Answer: X

Physical

A euphotic (nik-nob-ling) is a significant change in ?

Answer W: salinity

Answer X: density

Answer Y: light intensity

Answer Z: turbidity

Toss-up
Multiple Choice
Technology

Number 3

Question: The draft of a ship is the ...?

Answer W: amount of water it displaces.

Answer X: depth of its cargo holds.

Answer Y: number of tons of cargo it can carry.

Answer Z: minimum depth of water in which it can float.

Correct Answer: Z

Bonus
Multiple Choice
Technology

Number 3

Ships move from Lake Erie to Lake Ontario by _____?

the Welland Canal

Toss-up

Number 4

Thick unconsolidated sediments are usually encountered _____ 2

Toss-up

Number 6

Geography

Question: At your location it is 1630 Greenwich Mean Time (1630Z) at local

longitude?

at 45 degrees 30 minutes E

T-...

Physical

Question: In temperate zones the thermocline will be most pronounced during ...?

Answer X: summer

Answer Y: fall

Answer Z: winter

Biological

Answer W: digestive system

Answer X: skeletal system

Multiple Choice
Social Sciences

Monterey, California was a favorite haunt of this author of numerous books

reference to a lake?

Toss-up
Multiple Choice
Physical

Number 11

Answer W: to cause the height to fluctuate in a regular pattern

Answer X: to decrease the height

Answer Y: to increase the height

Answer Z: to cause the height to fluctuate in an irregular pattern

Correct Answer: X

Bonus
Multiple Choice
Physical

Number 11

Depression (one or both) of the lunar orbit is responsible for variations

Toss-up
Multiple Choice
Biological

Number 12

Question: Kelp lacks ...?

Answer W: a stipe

Answer X: roots

Answer Z: a holdfast

Correct Answer: X

Bonus
Short Answer
Biological

Number 12

Question: What are the two (2) major limiting factors controlling the vertical and

Geological

Question: Groynes are structures built mainly to ?

Answer W: prevent local beach erosion

Answer Y: serve as fishing locations

Toss-up
Multiple Choice
Physical

Number 14

...there is a period of no current

MRD

Multiple Choice
Chemical

Water's uniqueness results from the water molecule's ?

Multiple Choice

_____ is the term used to describe the "backlash" of the 1970s. It is ?

Toss-up
Multiple Choice
Technology

Number 17

The greatest danger to these few scientists brave enough to dive under

Toss-up
Multiple Choice
Biological

Number 18

Answer W: sculpin

Answer X: livebearer

Answer Y: sea lamprey

Answer Z: sucker

Correct Answer: Y

Multiple Choice

Question: One likely result of El Niño is ...?

Answer W: cooler coastal water off California

Answer X: flooding in Peru

Answer Y: increasing marine bird populations in Oregon

Answer Z: melting of icecaps

Geological

Question: What percent of the world's fresh surface water is contained in the Great Lakes?

Answer W: 10

Answer X: 20

Answer Y: 50

Answer Z: 66

Correct Answer: X

Bonus

Multiple Choice

Geological

Question: The waters in areas with limestone bedrock are usually not heavily

Multiple Choice
Chemical

Question: The energy represented by the latent heat of melting is being used to...?

Answer W: raise the temperature of the ice

Answer X: raise the temperature of liquid water

Answer Y: break hydrogen bonds

Answer Z: break Van der Waals bonds

Correct Answer: Y

Bonus

Multiple Choice
Chemical

Question: The latent heat of vaporization of water is higher than its latent heat of melting because...?

all the hydrogen bonds need to be broken at the

Toss-up
Multiple Choice
Physical

Number 23

Question: Ekman transport predicts that in the Northern Hemisphere water will move...?

Answer W: to the right of the wind.

Answer X: to the left of the wind.

Answer Y: opposite to the wind.

Correct Answer: W

Points

Multiple Choice
Geological

Lead-210 with a half-life of 22 years is used to determine the rate of sediment

Toss-up
Multiple Choice
Biological

Number 25

Question: The world's largest fish is a filter-feeder that depends on plankton as a food source. This fish is the ...?

Answer X: Blue whale

Answer Y: Whale shark

Answer Z: Megamouth shark

Correct Answer: Y

Points

Short Answer

Multiple Choice.

Physical

Question: During ebb current the level of the water along the shore...?

W. rises

Answer Y: fluctuates

Answer Z: is unchanged

Correct Answer: X

Toss-up
Multiple Choice
Biological

Number 27

Question: What is the term for the light-producing organs of bioluminescent organisms?

photochromes

Answer X: photochromes

Answer Y: photophores

Answer Z: photoblasts

Correct Answer: Y

Bonus
Multiple Choice
Biological

Number 27

What is the term used to describe organisms which are planktonic only in

15. What is the name of the _____

Geological

Question: If a peat bed can be found beneath the ocean beach of a barrier island, it

is _____

Answer: The beach is very young

_____ beach is becoming increasingly scarce

Toss-up
Multiple Choice
Chemical

Number 29

Question: An alkaline solution has a pH of?

Answer W: 7

Answer X: 9

Answer Y: 0

Answer Z: 4

Correct Answer: X

Bonus
Multiple Choice

Number 29

**Multiple Choice
Technology**

Question: The chronometer developed by John Harrison was valuable because it made possible the accurate determination of ...?

Answer X: true north

Answer Y: inclination

Answer Z: longitude

Correct Answer: Z

Physical

Question: Salinity is expressed as...?

Answer W: parts per thousand by weight

Answer X: parts per million by weight

Answer Y: parts per hundred by volume

Toss-up
Multiple Choice
Biological

Number 82

Answer W: dinoflagellate

Answer X: diatom

Answer Y: bacteria

Answer Z: fungi

Question: One hundred eighty million years ago this super-continent began to break

Answer X: Gondwanaland

Toss-up
Multiple Choice
Physical

Number 35

Question: The greatest amount of heat loss from the world's ocean occurs through...?

Answer W: ocean currents

Answer Y: radiation

Answer Z: evaporation

Correct Answer: Z

Points

Toss-up
Multiple Choice
Chemical

Number 36

Question: When carbon dioxide combines with ocean water, it produces...?

Answer W: carbonate

Answer X: bicarbonate

Answer Y: carbonic acid

Answer Z: calcium carbonate

Correct Answer: X

Points

Multiple Choice
Chemical

Question: The "Rule of Constant Proportions" ...?

How can you determine salinity from the

Toss-up
Multiple Choice
Geological

Number 37

Linear or circular coral reefs connected from the island or mainland shore

by a lagoon are called?

Answer W: atolls

Answer X: barrier reefs

Answer Y: fringing reefs

Answer Z: flat reefs

Correct Answer: X

Bonus
Multiple Choice
Geological

Number 37

A classic example of hot spot generated volcanic peaks that originated at

Toss-up
Multiple Choice
Physical

Number 38

... surface of the world's oceans

Answer W: at 0° C

Answer X: at 4° C

Answer Y: at its freezing point

Social Sciences

Question: The theory of continental drift was first presented in 1912 by...?

Answer W: Harry Hess

Answer X: Frederick Vine

Answer Y: Alfred Wegener (*Veh'-geh-ner*)

Answer Z: Sir Edward Bullard

Correct Answer: Y

Bonus

Multiple Choice
Social Sciences

Question: Benjamin Franklin's nephew, Timothy Folger, produced the first map of the ...?

Answer W: North Atlantic Ocean

Answer X: Gulf Stream

Answer Y: Labrador Currents

Answer Z: U.S. Coastal Waters

Correct Answer: X

Physical

Question: The distance from crest to crest on adjacent wave forms is the ...?

Answer W: wave height

Answer X: wavelength

Answer Y: steepness

Answer Z: wave period

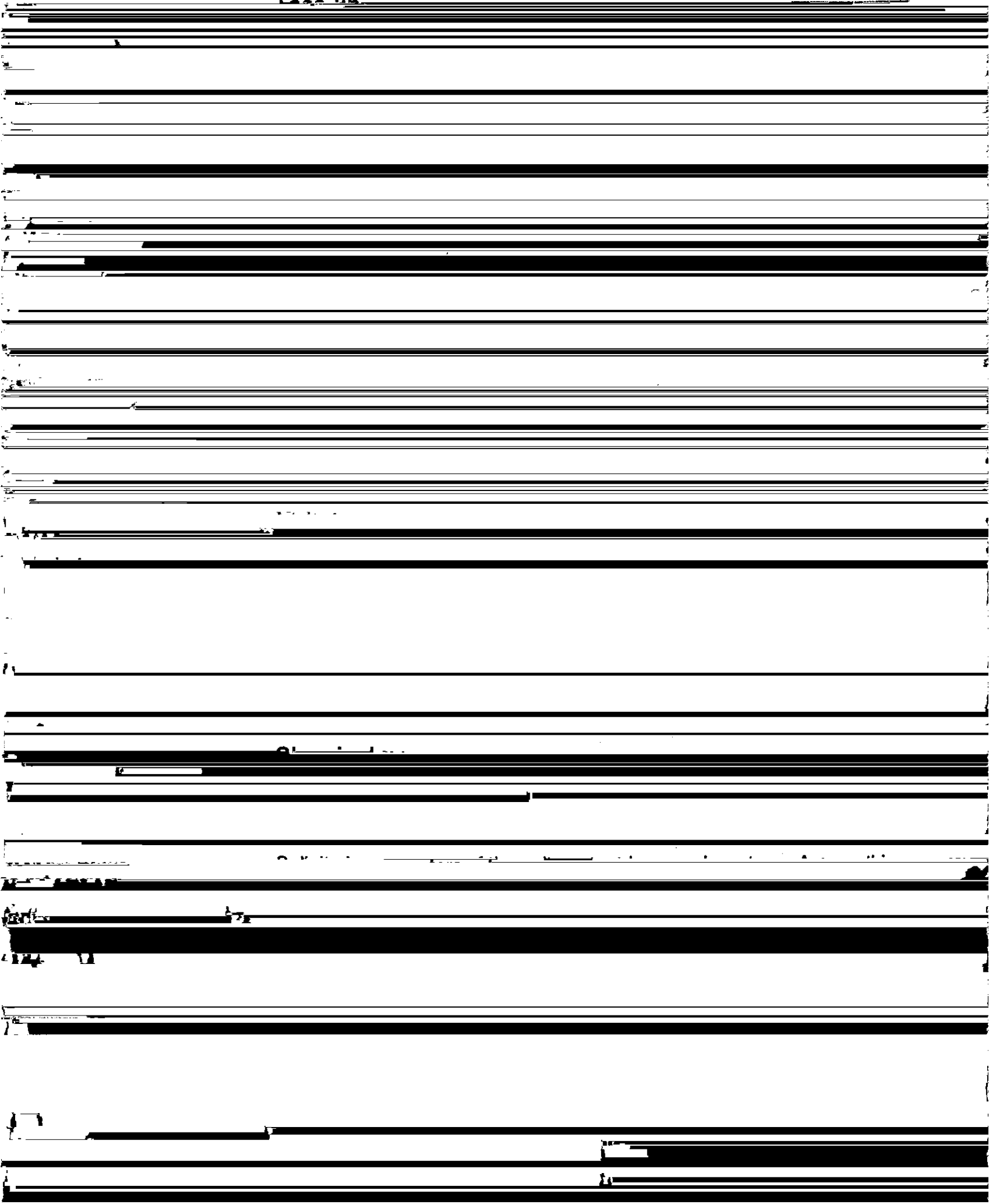
Correct Answer: X

Bonus

Multiple Choice

Physical

Question: Particles move back and forth in the direction of energy transmission in a medium that is transmitting this kind of wave. This kind of wave is called



Toss-up
Multiple Choice
Physical

Number 42

As a wave approaches the shore which of the

following does **NOT** occur?

Answer W: wavelength decreases

Answer X: wave velocity decreases

Toss-up
Multiple Choice
Geological

Number 43

Toss-up
Multiple Choice
Physical

Number 45

Question: A tsunami is an example of a...?

Answer W: deep-water wave

Answer X: shallow-water wave

Answer Y: forced wave

Answer Z: capillary wave

Correct Answer: X

Bonus

Number 45

Multiple Choice
Physical

Question: The interference pattern resulting from swell that is generated in different locations coming together crest to crest (in phase) is...?

Answer W: reflective

Answer X: constructive

Answer Y: destructive

Question: Sponges belong to which of the following phyla?

Answer X: porifera

Answer Y: echinodermata

Toss-up
Multiple Choice
Geological

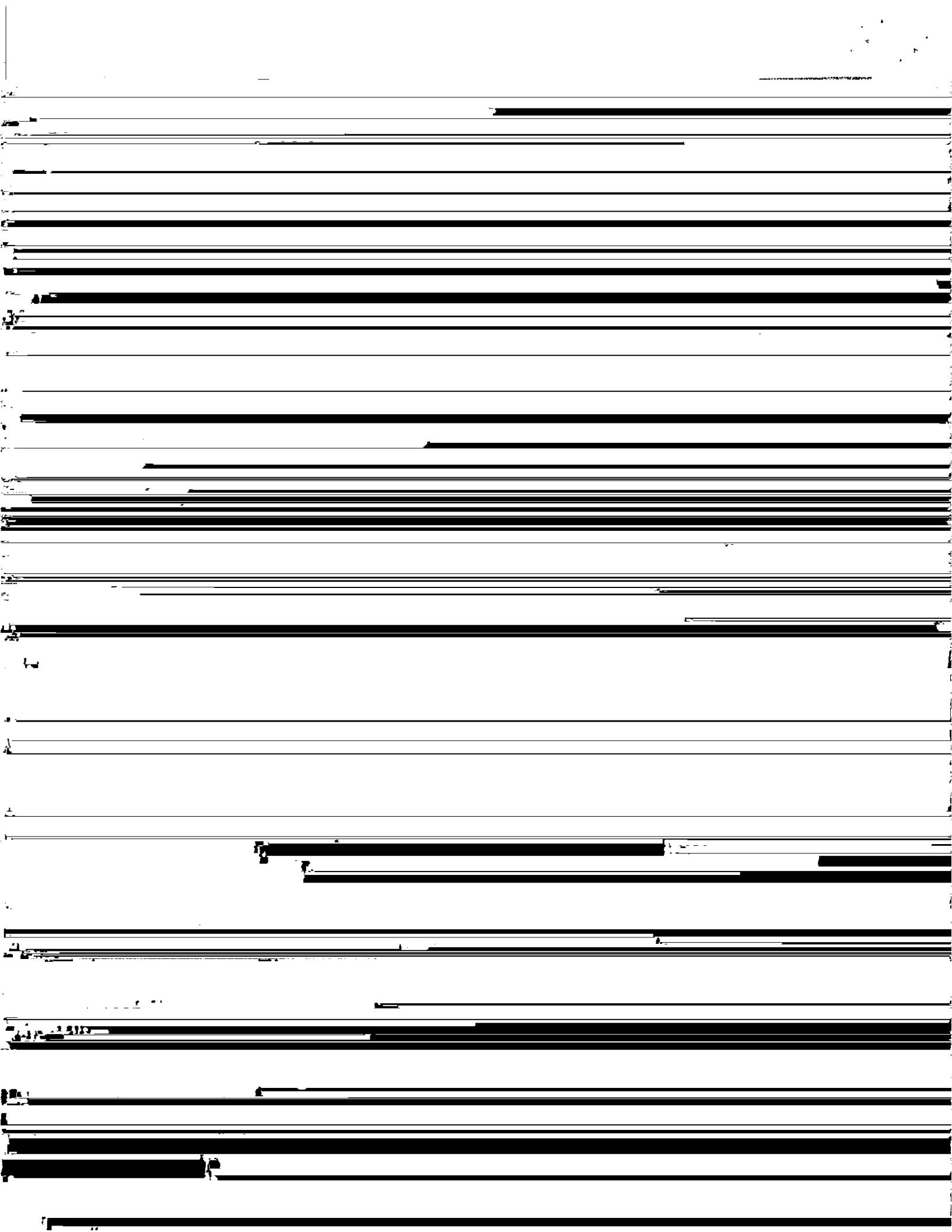
Number 47

Question: Before it was possible to date the age of rocks in years, relative dating

Answer W: lithology of rock layers

Answer X: fossil content of rock layers

Answer Y: thickness of rock layers



Geological

Question: An example of a primary coast is a...?

Answer W: volcanic coast

Answer X: wave-erosion coast

Answer Y: marine-deposition coast

Answer Z: coral-reef coast

Correct Answer: W

Bonus

Multiple Choice

Geological

Question: Beach slope increases as beach sediment becomes...?

Answer W: more angular

Answer X: coarser

Answer Y: finer

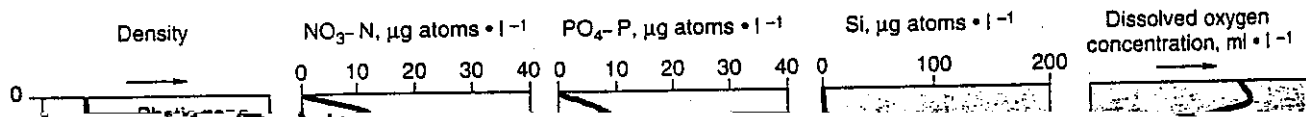
Answer Z: none of the above

Multiple Choice
Physical

The equilibrium theory of tides assumes an ocean ?

Answer W: is without friction

Answer X: lies in rectangular basins



Question:

6. In this section of the Northern Hemisphere, describe the resultant mesoscale water

Take a cross-section of the ocean surface along A-A'